

ElanCity

DETECT • INFORM • SECURE



THE EVOLIS

RADAR SPEED SIGNS



Elancity

208 Blythe Road
London W14 0HH

(020) 3936 0920

www.elancity.co.uk



Contents

ELANCITY : THE GLOBAL REFERENCE FOR RADAR SPEED SIGNS	2
WHO ARE WE ?	2
OUR MISSION.....	2
100 % FRENCH, 100% QUALITY.....	2
SATISFIED CUSTOMERS.....	3
RADAR SPEED SIGNS : EFFECTIVE ! POPULAR !	4
OVER 5,000 LOCAL AUTHORITIES EQUIPPED & SATISFIED	4
HOW DOES IT WORK?.....	4
THE EVOLIS RADAR SPEED SIGN: THE MARKET REFERENCE	5
PRECISE SPEED DETECTION	6
A VIVID, EYECATCHING DISPLAY SCREEN	6
TIME SLOT MODE	9
HIGH BRIGHTNESS LEDs FOR BOTH DISPLAYS (SPEED & TEXT)	9
DURABLE & AESTHETIC.....	10
CHOOSE YOUR POWER SOURCE	11
.....	12
SET-UP & CONFIGURATION SOFTWARE – ‘EVOCOM’	12
.....	13
TRAFFIC DATA SOFTWARE: ‘EVOGRAPH’ - ROAD TRAFFIC ANALYSIS MADE EASY.....	14
SAFE & EASY INSTALLATION	16
.....	17
WARRANTY & AFTER SALES SERVICE	17
2-YEAR WARRANTY (PARTS & LABOUR)	17
AFTER SALES HOTLINE	17
UNIT PRICE	18

ELANCITY : THE BENCHMARK FOR RADAR SPEED SIGNS

WHO ARE WE ?

Elan City is the UK subsidiary of the European group Elan Cité.

Based in France, Elan Cité is a world leader in Radar Speed Signs. Since 2005 we have been designing state of the art road safety and urban communication devices for Local Authorities worldwide. Over 11000 of our products have been installed across 45 countries.

We focus our attention on the production of a unique Radar Speed Sign model. When combining this with significant manufacturing volumes and an ultra-modern production process, the resulting economies of scale offer you unbeatable value for a tried, tested and technologically advanced product.

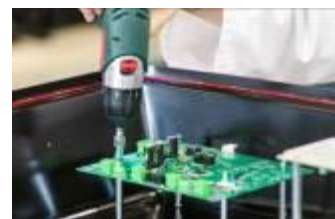
Our modus operandi is direct sale and customer focus. We believe that operating in this way allows us to ensure a coherent and thorough customer relationship before, during and most importantly *after*, the purchase of our products.

OUR MISSION

- To positively influence driver behaviour & make your roads safer
- To design innovative, robust and user-friendly products
- To offer a reactive customer service before, during & after your purchase
- To meet & surpass your expectations

100 % FRENCH, 100% QUALITY

All of our sub-contractors are French and all have ISO-9001 certification. The quality control procedures at all stages of the manufacturing process are extremely rigorous, afford us a consistency of production and our guarantee to you is that each and every one of our finished products is of the highest possible quality.



SATISFIED CUSTOMERS

Over 5,000 satisfied customers worldwide:



"Within the first few days of installing the speed signs from Elan City, we noticed vehicles slowing down at our toll plazas. Installation was a breeze, software was trouble-free and the customer support was excellent. This product is definitely living up to our expectations."

Eric Becker -Director of Roadway Operations - Kansas Turnpike Authority



"Evolis provided us a simple and fairly inexpensive solution for both monitoring vehicle speed while at the same time providing visual deterrent to motorist. The sign provides motorist speed in addition to providing a customised message display. In addition this portable speed sign provides us statistical feedback that aides us in furthering our enforcement efforts. The customer service department far exceeded our past experience with other vendors."

Chief Joseph A. Sinagra - Saugerties Police Department

RADAR SPEED SIGNS : EFFECTIVE ! POPULAR !

OVER 5,000 LOCAL AUTHORITIES EQUIPPED & SATISFIED

In 2007, 500 Local Authorities were using our Radar Speed Signs. In 2018 there are over 5,000. Why?

- » A proven effect upon driver behaviour. Our customer feedback indicates that in the majority of cases there is a concrete and tangible decrease in the average speed recorded in the vicinity of an Evolis device. A significant proportion of customers have quantified this reduction as high as 25%.
- » An impact upon driver behaviour in both the long and short term.
- » An overwhelmingly positive image amongst residents and motorists alike.
- » An ability to record road traffic data and present it in a user friendly format.

HOW DOES IT WORK?

A Radar Speed Sign *confronts* motorists with their speed and has the effect of moderating driver behaviour.

The Evolis radar speed sign is equipped with what is known as a 'Doppler' radar antenna. It emits magnetic waves which bounce off the first moving vehicle. The measurement of the frequency of the returning wave allows the Evolis to determine the vehicle's speed. As soon as this vehicle moves out of range, the radar will automatically start detecting the next moving vehicle, and so on...

If the recorded speed is *below* the local limit, it will appear in **GREEN** on the screen. Speeds *above* the limit appear in **RED**. A message will also be displayed and this will vary dependent on the vehicle's speed ('Thank you', 'Slow Down' 'Too Fast').

Note: If desired, the user can amend all threshold settings, colours and text messages...

A Radar Speed Sign is only effective if the quality of the display screen matches that of the radar technology inside the device. ***It has to be able to 'see' but it also has to be seen...***

THE LONGER THE TIME PERIOD THAT MOTORISTS ARE MADE AWARE OF THEIR SPEED, THE MORE LIKELY THEY ARE TO MODIFY IT.

The Evolis Radar Speed Sign possesses...

- The very best radar antennas to ensure the **LONGEST POSSIBLE DETECTION RANGE**
- A triple LED display that ensures a vivid, eye-catching display that is **VISIBLE FROM LONG DISTANCE**

THE EVOLIS RADAR SPEED SIGN: THE MARKET REFERENCE

Accurate and Reliable

The latest ElanCity Doppler antenna.

- Speed display accuracy of +/- 1%
- Detection range up to 300 yds

Intelligent

Connect to your device via USB or Bluetooth

- Records traffic data in both directions



Durable

ABS Polycarbonate housing :
resists stone projections &
doesn't rust!

An entirely sealed unit ; no
public access; cannot be
tampered with

Easy installation & set-up

- Weight 22lbs (10kg)
- Mounting kit included
- Easily installed by 1 person
- Set the dial to the speed limit ...
- ...and the EVOLIS is operational

High-vis screen for Maximum impact

- Triple LED speed display (34cm)
- Extra large text display (16cm)
= Best long range visibility
= Best daylight hours visibility

PRECISE SPEED DETECTION

The radar antenna is one of the principal elements that determines the quality of a Radar Speed Sign.

- » LONG RANGE detection
- » PRECISION detection

The EVOLIS is constructed around the latest 'Doppler' radar antenna.

- » It is safely located inside the radar casing
- » It is accurate to +/-1%
- » It has a detection range of up to 300 yards
- » It detects the speed of both oncoming *and* outgoing vehicles. The outgoing vehicle speed is never displayed but IS recorded for subsequent analysis.

A VIVID, EYECATCHING DISPLAY SCREEN

SPEED DISPLAY

The EVOLIS factory setting will display the recorded speed as follows: If desired, these settings can be modified.

- » If the speed is below (or on) the limit, the display is **GREEN**.
- » If the speed is above the limit, the display is **RED** and this will **FLASH** at speeds that exceed 5mph above the speed limit.
- » At or beyond 11mph above the speed limit, the speed display will disappear; to be replaced, at your discretion, either by a Warning Triangle or a blank screen.
- » Note : You can override the factory setting and add **AMBER** as an intermediate 3rd colour



MESSAGE DISPLAY

The *simultaneous* display of both speed AND message reinforces the impact upon the motorist and enhances the traffic calming effect.

- » Certain products on the market will only display the speed.
- » Others will combine this with a single, non-modifiable, message.

The Evolis radar speed sign displays the speed at the same time as 5 (programmable) messages. If you do not wish to program your own messages, the factory setting (which you can easily re-configure if desired) will display the following messages dependent on the speed recorded.....



'*THANK YOU*' is displayed from 9mph up to and including the speed limit. The 9mph threshold can be modified closer to the limit to save on power.



As of 1mph over the speed limit '*SLOW DOWN*' appears and will remain up to and including a speed of 10mph over the limit



If and when the motorist exceeds the speed limit by 11mph or more, the speed display will disappear and the message '*TOO FAST!*' will appear




The message screen size of 64cm x 16cm allows the message to be read from long distance, simultaneous to the speed display



The combination of speed, flash AND message display is crucial in terms of the visual impact upon the motorist.

Other models	Other models	THE EVOLIS
Speed only	Speed or text	SPEED AND TEXT

You can personalize the message display. For example.....

Type of message		Line height	Number of characters
1 Line of Text		6.3" (16cm)	Up to 8
2 Lines of Text		3" (8cm)	Up to 11 (per line)
Icons		6.3" (16cm)	

The *quality* of the screen display is crucial. This boils down to not only the clarity of display but also its long-range visibility and legibility (these are not necessarily the same). It is important to keep this in mind when considering the purchase of a radar speed sign.

- Clarity : The Evolis screen is maxi size (34cm high)
- Long range visibility: The Evolis uses a 3 LED configuration allowing it to maximize the distance from which it can be read. Certain models available on the market will display speed with 1 or 2 lines of LEDs whereas others (such as the Evolis) use 3 lines; this represents a significant difference in terms of quality and visibility of display, notably in conditions of strong sunlight.



TIME SLOT MODE

The Evolis allows you to program and display event or location specific messages by means of its 'Time Slot' mode and, as the name implies, you can program these messages so that they are active at particular times of day or on specific days only. Below, you can see the Time Slot programming page within Evocom (see Page 12; *Evocom is the software that allows you to communicate with your Radar sign*) and also a selection of the type of image or message that you can program to be shown at certain times of day.

The screenshot shows the Evocom software window with the following sections:

- DAYS:** A list of days from Monday to Sunday, each with a checked checkbox. There is also a 'Select all' checkbox which is checked.
- Operating hours:** A table with 'Start' and 'End' columns. It contains four time slots:

	Start	End
Time slot #1	07:30 am	10:00 am
Time slot #2	11:30 am	12:30 pm
Time slot #3	13:30 pm	14:30 pm
Time slot #4	16:30 pm	17:30 pm

Below this table is a checkbox labeled 'Radar operation restricted to time slots' which is checked.
- THRESHOLD:** A section with five sliders and corresponding speed values in Mph:
 - Minimum speed displayed: 25 Mph
 - Color changing speed: 39 Mph
 - Flashing display trigger speed: 60 Mph
 - Maximum speed displayed: 83 Mph
 - Relay trigger speed: 124 Mph
- Complementary mode:** A section with a label 'Alternative display mode enable' and two radio buttons: 'Yes' (selected) and 'No'.
- MESSAGES:** A section with five messages, each with a slider and a speed value in Mph:
 - Message #1: 29 Mph
 - Message #2: 39 Mph
 - Message #3: 60 Mph (with a lightbulb icon)
 - Message #4: 158 Mph (with a lightbulb icon)
 - Message #5: 19 Mph

At the bottom right of the window are 'OK' and 'Cancel' buttons.



HIGH BRIGHTNESS LEDs FOR BOTH DISPLAYS (SPEED & TEXT)

- OSRAM SMC high brightness low consumption LEDs
- Lifetime > 100.000 hours
- High visibility process with contrast lenses
- Automatic brightness adjustment control



DURABLE & AESTHETIC

FRONT VIEW








BACK VIEW



Elements	Specifications	Benefits
Front Face	Antiglare Polycarbonate. Convex shape	Excellent impact resistance (stone projections) Excellent visibility even in bright sunlight
Casing	Reinforced Polycarbonate ABS resin. No external metal components. The build quality ensures that the EVOLIS is fully shock and vibration resistant and is not susceptible to deformation.....	Excellent impact resistance. Will not rust
	Internal Battery housing - padlock secured. The settings selector & USB port are located inside the battery housing.	Discreet and secure. Eliminates the risk of public access or vandalism.
	Lightweight unit : 10kg (22lbs) Dimensions 27" x 27" x 6"	Easy to install and dismantle. Limits the load capacity requirement of poles and concrete blocks.
	Waterproof IP 67 (NEMA 3). A totally enclosed, one piece unit	Eliminates the chance of rust. Note : Any sealed casing incorporating batteries requires a system that allows for air depressurization : The Evolis uses a Goretex valve.
	Light colour Polycarbonate ABS	Light colours attract and generate less heat than dark colours. (Ambient temperatures that are too high have an adverse effect on the type of electrical components contained in a Radar Speed Sign)
	Both the colour and the anti UV qualities of the casing are integrated into the polycarbonate material	No paint or external coating. No risk of chipping, flaking or rust. Prolongs product life-span

CHOOSING YOUR POWER SOURCE

Mains 'Mobile' Pack	Mains Pack (same pack as Street Light')	Street light Pack (same pack as Mains)	Solar Panel Pack
			
<p>Recharge the internal batteries with an external charger.</p> <p>4 batteries are supplied.</p> <p>2 are used to power the Evolis.</p> <p>The remaining 2 can be externally charged to provide instantly available back up.</p> <p>The external charger is provided as part of the pack.</p>	<p>The EVOLIS is wired directly into the mains AC supply.</p> <p>No battery is required (although 1 is supplied to allow you to choose the Street Light option at any time).</p> <p>An integrated transformer supplies power at 12 Volts.</p> <p>1 battery is supplied</p>	<p>The EVOLIS is wired into your Street Lighting network.</p> <p>When the street lights are ON, the Evolis draws its power directly from the street lights & the internal battery is charged at the same time.</p> <p>When the street lights are OFF the internal battery then takes over & provides the power.</p> <p>1 battery is supplied</p>	<p>2 Batteries are supplied (12 Volts 22 Ah) & are charged by a solar panel (80 Watts).</p> <p>Solar panel dimensions: 38" x 27". This compact size limits wind impact.</p> <p>Charging capacity of up to 5.3 A.</p> 

Note: The Evolis radar has a power consumption configuration as per the table below

DISPLAY	Average current	Average power at 12 Volts
Speed only	0,3 Ah	3,6 W
Speed and message	0,8 Ah	9,6 W
Stand-by (no display)	0,1 Ah	1,2 W

SET-UP & CONFIGURATION SOFTWARE – ‘EVOCOM’



The EVOLIS device is set up & managed through of the ‘EVOCOM’ set-up software. (This software is an integral part of the purchase and you have free access to all future updates and improvements)

You can communicate with your Evolis by means of...

- » A USB cable connection (the USB slot is inside the casing)
- » Bluetooth (password protected) : PC, Tablet or Smartphone App
- » Web. G.P.R.S. (upon request)

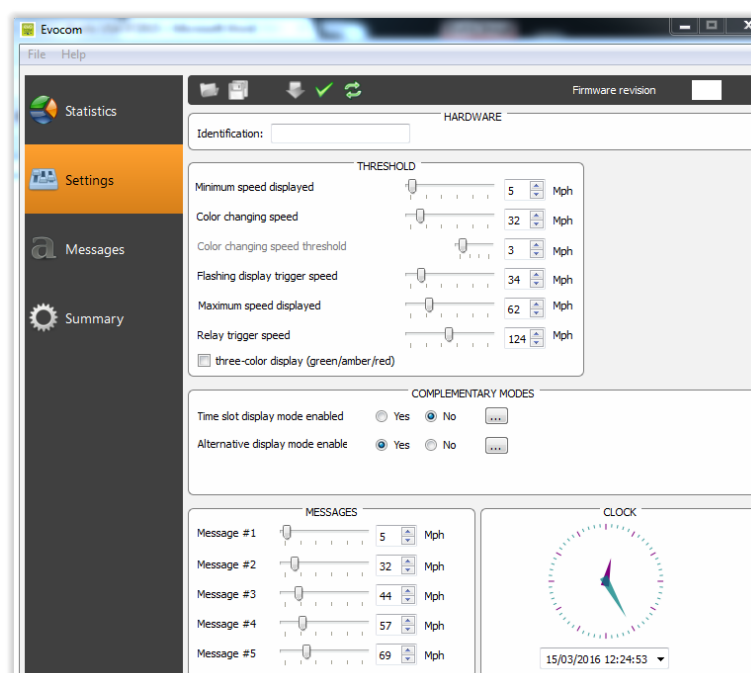


The EVOCOM software allows you to modify the Evolis parameters (add or modify text messages, alter speed thresholds, add or remove AMBER speed display....etc). It is incredibly simple to use.

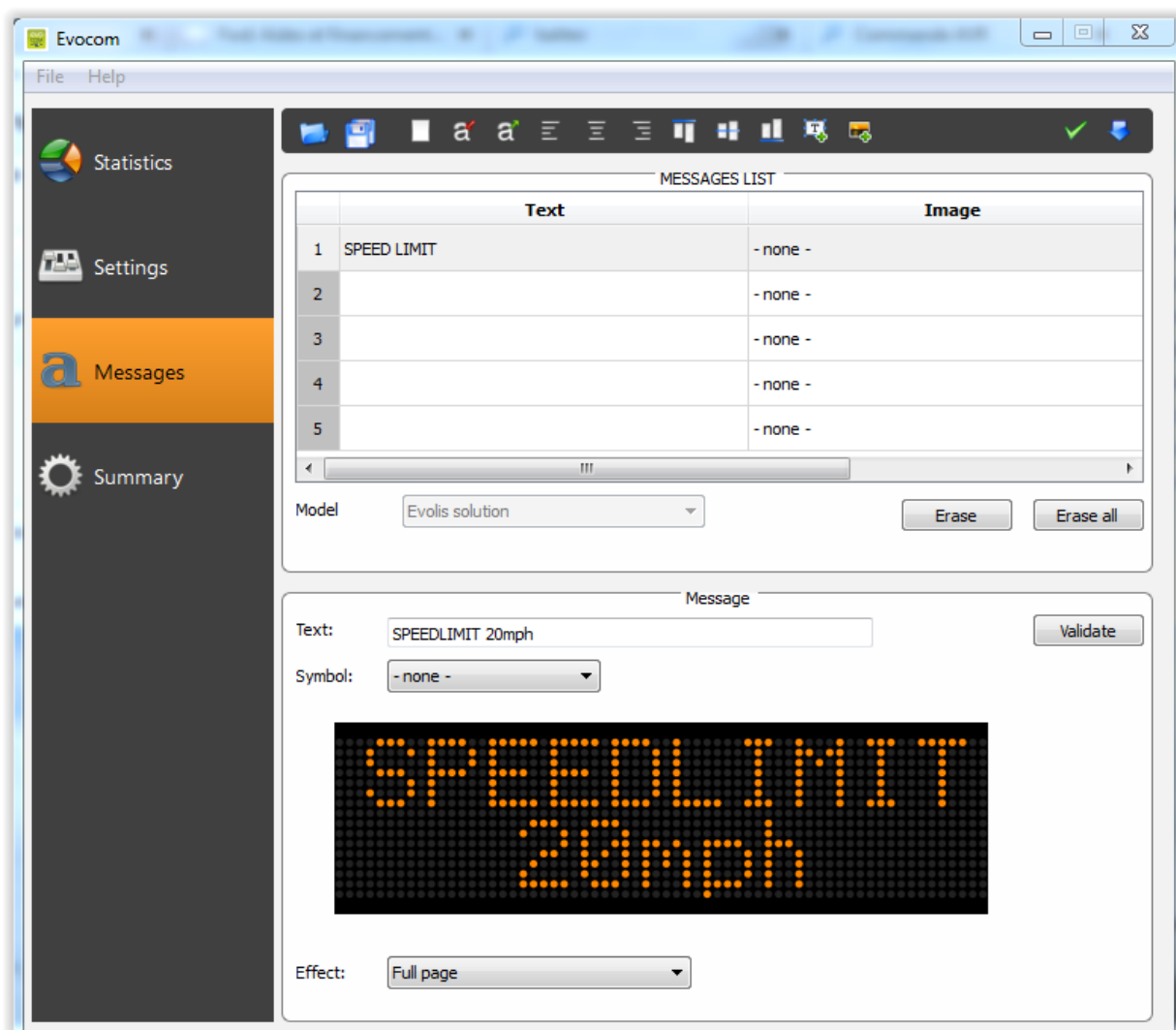
Below you can see 2 examples of EVOCOM and how it interacts with an Evolis radar;

Example 1 gives a snapshot view of the SETTINGS page. This page acts as your principal interface to the radar device and from here, the user can.....

- Control the speed thresholds at which the radar sign reacts
- Control the speed thresholds at which text messages are displayed
- Activate ‘time slot’ settings that modify the radars display at certain times of day (i.e. school hours)
- Activate a Warning Triangle display at certain speed thresholds
- Activate the ‘SPY’ mode (the screen display is blank but the radar data collection remains active)



Example 2 gives a snapshot view of the MESSAGES PAGE. This page acts as your mechanism whereby you can create your own display messages or indeed choose from the array of pre-programmed images such as smileys etc... The factory setting messages (THANK YOU, SLOW DOWN, TOO FAST) are included as pre-programmed images allowing you to revert back to factory set messages at any time if you have previously replaced them with your own



TRAFFIC DATA SOFTWARE - 'EVOGRAPH' - EASY ROAD TRAFFIC ANALYSIS

Data is COLLECTED using the Evocom software (see above).

You can then ANALYSE the data by using our **EVOGRAPH** software



(As with the Evocom software, Evograph is an integral part of the purchase and you have free access to all future updates and improvements)

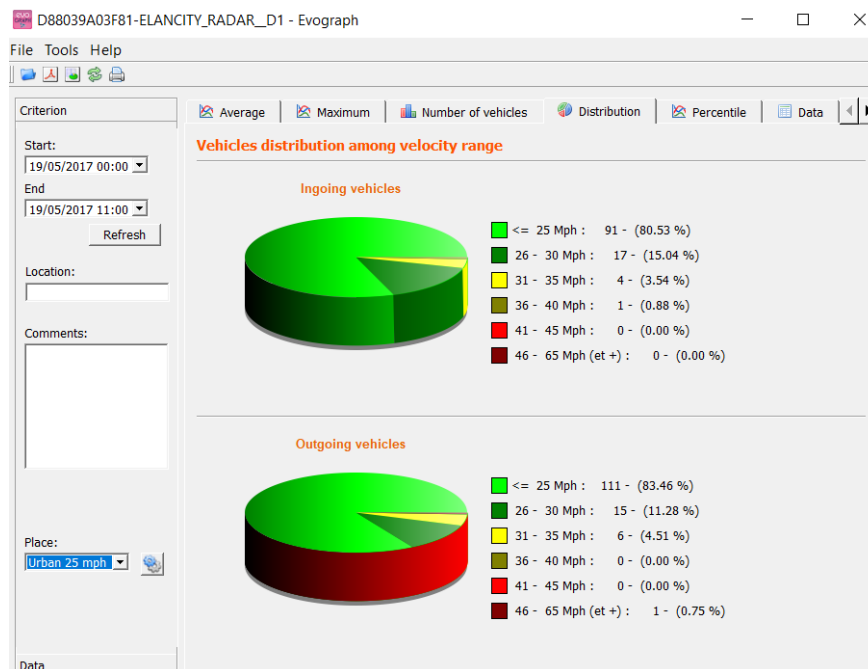
Many different types of analysis reports can be generated in chart format.

- Distribution of vehicles by speed range
- Maximum speed
- Percentiles: V30, V50 and V85
- Amount of vehicles
- Average Speed

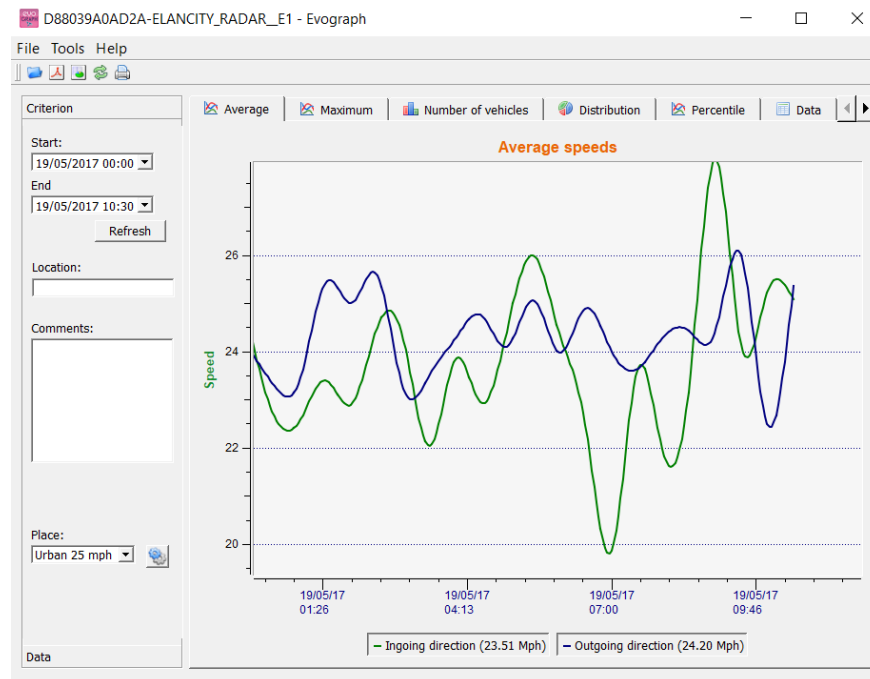
Data can also be exported into Excel format for further analysis. Or, directly into PDF reports for mailing, printing and video presentations.

Below you can see 2 examples of how traffic data analysis is presented by EVOGRAPH

Example 1 gives a snapshot view of the DISTRIBUTION page where, as the name suggests, the speed statistics for a given period (that the user defines) are displayed in pie-chart form.



Example 2 gives a snapshot view of the AVERAGE page where the average speed statistics for a given period (that the user defines) are displayed in chart form



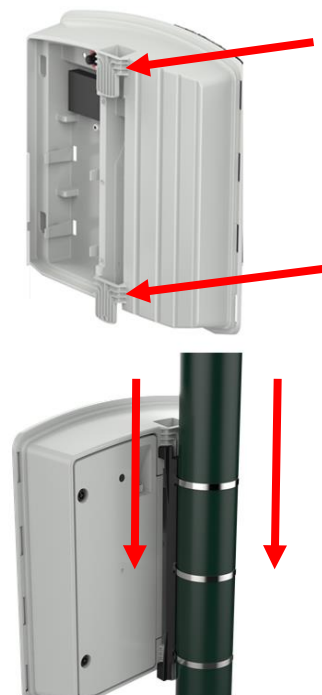
SAFE & EASY INSTALLATION

The Evolis radar speed sign was designed so that its installation falls within the scope of your average DIY enthusiast. The intention is that you install it 'in-house'. If this isn't possible any reliable local tradesman should be able to do it for you.

Step 1: Attach the supplied mounting bar ensuring that the end stamped 'TOP' is indeed at the top. Use fixing straps or Jubilee Clips (note: these are not provided)



Step 2: Slide the 2 hooks onto the bar. We suggest that you then attach a padlock in order to avoid any form of non-authorized access. (a locking hole is built-in to the Evolis casing)



Step 3: Insert the batteries (if applicable)



Step 4: select the desired speed threshold on the dial selector. Or, select 'SP' (which allows you to override all factory settings) and then set your own preferred threshold via Evolis.



THE EVOLIS RADAR SPEED SIGN IS NOW UP & RUNNING!

WARRANTY & AFTER SALES SERVICE



2-YEAR WARRANTY (PARTS & LABOUR)

Evolis radar speed signs are fully guaranteed for 2 years. This applies to both parts/labour and is valid from the date of despatch of the device.

If you believe your device to be faulty, the first step is to contact our after sales department. In the first instance we'll conduct a diagnosis/trouble shoot over the phone (in a sizeable majority of cases this procedure will resolve the problem). If, however we identify either a manufacturing error or faulty component we'll arrange to return the device our own workshop for repair (the transport costs are fully covered under the terms of the guarantee)

In such a case we pledge...

- To collect the device within 10 working days from the point of diagnosis. In practice, the 10 days apply from the point at which we are advised that the device is subsequently packed and ready for transport (see below for an important note regarding the packing materials).
- To repair and re-send the device to you within 10 working days of our receiving the device at our workshop

PLEASE RETAIN THE ALL ORIGINAL PACKAGING THAT PROTECTED YOUR EVOLIS WHEN IT WAS FIRST DELIVERED: NOT DOING SO CAN INVALIDATE THE WARRANTY

PLEASE NOTE THAT THE WARRANTY DOES NOT APPLY IN INSTANCES OF DAMAGE CAUSED BY VANDALISM, IMPACT DAMAGE, THEFT, INNAPPROPRIATE USE or MISHANDLING

AFTER SALES HOTLINE

It goes without saying that if you require any kind of help or guidance you can contact us. Our service team is always here to help!



www.elancity.co.uk
(020) 3936 0920

EVOLIS Radar Speed Sign :		PRICE £
<p><u>Radar ready for installation including :</u></p> <ul style="list-style-type: none"> - <i>SPEED Display Screen : 34 cm digits (green-amber/red) Warning Triangle (anti-race effect),</i> - <i>Dynamic MESSAGE Screen : 16x64 cm, fully programmable</i> - <i>USB & BLUETOOTH connectivity</i> - <i>TRAFFIC STATISTICS recorded for both directions of travel,</i> - <i>Device management & data analysis software packages for PC included,</i> - <i>Installation kit included (does not include fixing straps),</i> - <i>2 year WARRANTY : Parts, labour, Factory return (inc. Transport costs in & out)</i> 		
<p>MAINS Pack (includes 1 battery 12V22Ah)</p> <ul style="list-style-type: none"> - Connect either to mains permanent current or to street lighting network 		<p>£1399 (not inc. VAT)</p>
<p>SOLAR Pack (includes 2 batteries 12V 22 Ah, 80W Solar panel & panel fixings)</p> <ul style="list-style-type: none"> - No need for any external electrical connection 		<p>£1799 (not inc. VAT)</p>



OPTIONAL ACCESSORIES	
<p>Additional Mounting Bar</p>	<p>£49 (not inc. VAT)</p>
<p>External Battery charger <i>Notably, for radar screens intended for battery powered MOBILE use</i></p>	<p>£95 (not inc. VAT)</p>
<p>Additional Battery</p>	<p>£95 (not inc. VAT)</p>
<p>Telephone support for installation, set-up and use of device</p>	<p>FREE</p>

- Payment terms : 30 days upon receipt of goods.
- Delivery of Goods : 4 to 6 weeks from receipt of signed Purchase Order
- Transport Costs: £90 (not inc VAT) for full pack, to anywhere in the UK